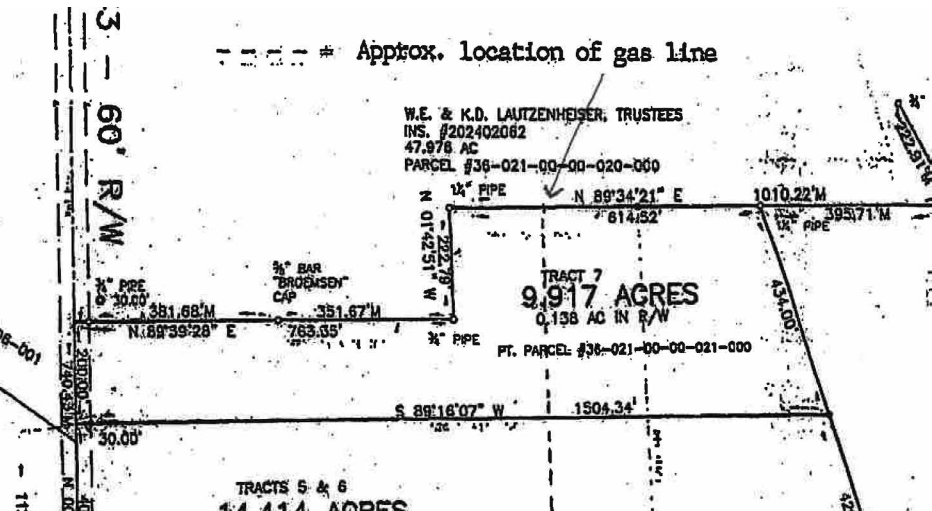


ABSOLUTE AUCTION

MONDAY, MAY 12, 2025, 5:30 PM



LAND



LIVE ONSITE WITH ONLINE BIDDING AVAILABLE

AUCTION HIGHLIGHTS

- Suffield Twp.
- Portage Co.

REAL ESTATE

9.9+ acres of open land. 200' frontage on Rt. 43. Some marshlands in rear. Flag shape parcel. Mineral rights transfer. Walk it over at your leisure. Backs up to Congress Lake property. Maps at site or visit us on the web.

TERMS ON REAL ESTATE

10% down auction day, balance due at closing. A 10% buyer's premium will be added to the highest bid to establish the purchase price. Any desired inspections must be made prior to bidding. All information contained herein was derived from sources believed to be correct. Information is believed to be accurate but not guaranteed.

AUCTION BY ORDER OF
Jeff Bixler

9.9 ACRES OF
VACANT LAND

GPS USE 44 ST. RT. 43,
HARTVILLE, OH 44632



RUSSELL T. (RUSTY) KIKO, JR.
AUCTIONEER/REALTOR
330.495.0923
rustykiko@kikocompany.com

www.kikoauctions.com | 800.533.5456

Information is believed to be accurate but not guaranteed.
KIKO Auctioneers



Scan for auction details, including directions.

Absolute Auction.
All sells to the highest bidders on location.